

Remote Video Remote CCTV

Remote **VitalPoint, Inc.** Remote Video

PhoneHub

Remote Video over the Phone

Remote Video Remote CCTV

Remote CCTV Remote Video

Remote Video Remote CCTV

Remote CCTV Remote Video

Remote Video Remote CCTV

Revised March 2000

Copyright © 1997-2000. All rights reserved.

Model PHUB1002

Remote CCTV Remote Video

Preface

VitalPoint® is an American company that designs and manufactures remote video products for home and business. These products are used to view remote sites via modem and/or Local Area Network (LAN). All of our products are standalone units not cards that plug into your computer.

The Company

VitalPoint was incorporated in the State of Colorado in 1997. It is a privately held Corporation and all funding is supplied by private American investors. VitalPoint sells through distribution channels, OEM's and resellers. The company's founders are experts in the fields of business, high speed networking and video transmission. VitalPoint's mission is to provide quality USA manufactured products. We are in the business of remote video via phone or LAN. It is our goal to offer products and support for our customers to the best of our ability.

Remote video over a standard phoneline



The PhoneHub is a standalone self contained single piece of computer hardware. You plug your cameras into the PhoneHub and then plug your phone cable from the PhoneHub directly into the phone wall jack. Modem is included in the PhoneHub.

PhoneHub how it works

The PhoneHub product is used for remote viewing of any place, person, business or situation over a standard phone line using our GUI application and your modem in your PC.

Our software application runs on Microsoft Windows 95 or 98, Windows 2000 or NT. The application uploads images over a standard phone line for viewing on your personal computer or laptop.

The application is menu driven you may view a single camera continuously with frame rates of 2-5 frames per second at CIF: 320 x 240 image size in color or view multiple cameras up to 4 standard cameras per screen on the base unit.



The product is positioned as a home or business visual monitoring system you may view single or multiple shots over the phone consecutively, it's not a real-time monitor, or video system. These types of monitors or video devices cannot transmit multiple cameras from a remote location. You may use a standard home video camera or any CCTV camera (Composite Video Camera) as the input if you wish.

Our product also gives you the ability to transfer CCTV camera images or analog tape video camera images to JPEG files that may be saved to disk and later use them for other purposes i.e., web pages, sending email pictures to relatives making computer documents.

Configuration

The PhoneHub is a RISC computer with internal modem which is fed with images that are gathered from a single camera or up to a maximum of 32 cameras, (NTSC or PAL cameras). The main PhoneHub has support for 4 camera connections and or 4 camera expansion units for a maximum of 32 cameras. Each camera expansion unit will support 8 cameras off each port on the PhoneHub.

There are 2 additional ports on the PhoneHub one for the phone connection jack which connects up to our internal modem. The second is for a direct connection to the hub with a standard RS 232 connector. This can be used to set up cameras at the site to be monitored and then disconnected.

There are 2 methods to access the PhoneHub direct (RS 232) or via the modem. If your at your office or home you can view images from your computer without the modem. If you leave this location you can dial in to the same system without re-wiring. The PhoneHub product can only be accessed by one interface at a time. The maximum configuration requires 1 PhoneHub unit, 4 camera expansion units and 32 cameras, only one phone number and line is required.

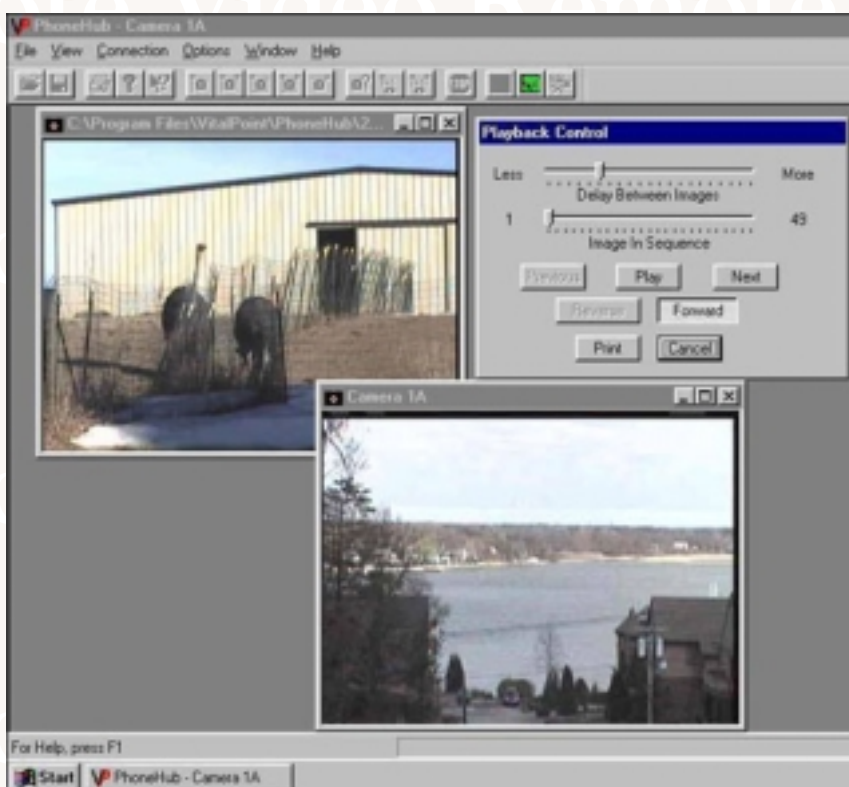


The PhoneHub product kit includes the following equipment

- 1.) PhoneHub hardware, standalone RISC computer with internal modem.
- 2.) PhoneHub software for Windows 95/98/2000/NT
- 3.) 7 ft. Comm port cable and 9 pin adapter for direct connection use with your computer
- 4.) 7ft. Phone cable for phone outlet
- 5.) Four 10 ft camera cables and Balun adapters for conversion from BNC/RCA to RJ 45
- 6.) PhoneHub installation manual
- 7.) PhoneHub power supply

The product kit does not include cameras.

Playback any pre-recorded data



The PhoneHub Product allows you to record and playback images. There is no limit to the images you wish to record. PhoneHub allows you to record 200 consecutive images with the click of one icon. As its recording you have the option to increase the recorded images 200 at a time. The amount of allowable images to record is infinite depending on disk space. Our images are 5K-10K bytes in size so you can record for quite awhile before using up any noticeable disk space.

Recorded images can be played back by clicking on the Playback icon. A window will be displayed to select the files to be played back.

Click on the folder desired and an image in the folder. Then an image will appear on the screen along with menu. Click on the desired menu options. Forward or Reverse will allow the user to select the direction of playback.

Play is used to start the process. Stop is used to stop the process. A scroll bar is available to increase or slow down the speed of the playback. Another scroll bar is available to go directly to the desired images. Next and Previous are used to single step forward or backward through the images. Print is used to print an image. Cancel is used to get out of the playback.

Remote Video Remote CCTV

Camera expansion unit

A camera expansion unit is available and supports 1-8 CCTV cameras. You can use up to 4 camera expansion units per master unit. This camera expansion unit works with all our other models of master units.



- The Camera expansion unit will add up to 8 CCTV cameras per port to the master unit.
- This unit will run on both the PhoneHub and NetCCTV models.
- VitalPoint will supply you with a one foot cable to connect the camera expansion unit to the master PhoneHub unit.

The expansion unit takes its power from the master unit. Purchase of required camera Balun adapter cables with this unit is necessary.

System Minimum Prerequisites

Computer: IBM compatible computer with a minimum 133 Mhz Pentium processor.
Memory: Minimum 16 Mb.
Software: Windows 95
Modem: Minimum 28,800k standard's based modem
Display: Most monitors that display higher than 256 colors.
Disk Space: Minimum 5 Mb.

Specification

RISC Processor
128KB Flash memory
4MB DRAM memory
512KB SRAM
UART with modem control
Power on LED, LED flashes when receiving images
Internal Rockwell Modem
DAA telephone connection, used with MODEM out to the phone line
Composite Video Decoder, Video Decoder See Rockwell specifications for BT829A
Power is through an AC adapter 5 VDC, up to 1.5 A
The unit has two 6 position jacks and four 8 position jacks

Product size

8" x 5" x 1.33" (L x W x H). Weight approximately 3 pounds. For indoor use ONLY.

Power

Regulated +5VDC, 1.5A minimum. Table top power source with AC power cord

Product software and manual updates

Updates will be made periodically or whenever necessary and posted on our web site at <http://www.vitalpoint.com/>

Remote Video Remote CCTV

Remote CCTV Remote Video

Remote Video Remote CCTV

Remote CCTV Remote Video

Remote Video Remote CCTV

Remote CCTV Remote Video

Corporate Office

VitalPoint, Inc.®

15770 Hopper Road

Peyton, CO 80831

Phone: 1-719-749-0371

FAX: 1-719-749-2375

<http://www.vitalpoint.com>

Remote Video Remote CCTV

Remote CCTV Remote Video